



St Mary's Bryanston Square

## Ofsted Parents' Meeting

Ofsted Inspection February 6<sup>th</sup> & 7<sup>th</sup> 2014

'The school is a cohesive community focused on raising standards while maintaining the strong culture of pupils' spiritual, moral, social and cultural development.'



### ★ The Strengths of the School: ★

- Children's *exemplary* behaviour around the school and their highly positive attitudes in lessons
- Children's Social, Moral, Spiritual and Cultural Development
- Positive learning environments created by teachers
- Teaching of Reading and children's enjoyment of reading
- The rapid progress some pupils make as a result of good teaching
- The way support staff help children with their learning
- The effective teaching and variety of activities on offer in the Early Years
- Positive links with parents and the local community
- Range of trips and extra-curricular activities
- Sports provision

### The report says we are **already**:

- Improving progress across the school so that there is no 'gap' between different groups of children
- Accelerating progress (for all children)
- Developing our teaching
- Identifying the right actions to move the school forward



### The report says we need to:

- Continue making improvements to teaching (so that all children achieve as highly as possible)
- Develop Writing and Maths
- Make it clear how well children are progressing (especially Pupil Premium children) with statistical data



### It is important to understand that:

- A lot of the report talks about how the school needs to **demonstrate** better the progress that the children make – this is not the same as saying the children are not making progress
- If one area (in our case 'Achievement') requires improvement, this will usually lead to the other areas also requiring improvement as the grades are inter-linked. Actually the majority of the teaching was 'Good' and many positives were noted about the Leadership and Management.
- Behaviour had to be at least good because the children's behaviour is 'exemplary'
- The Pupil Premium is a new focus (which didn't exist 3 years ago)

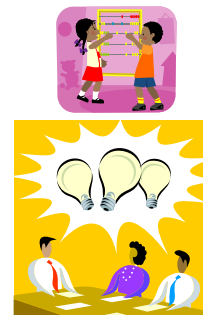
We are already:

- Implementing a new marking system



We are already:

- Holding regular Pupil Progress meetings to discuss ALL the children, on an individual basis, to check how they are progressing and where necessary give extra support



We are already:

- Visiting other schools to pick up ideas and tips



We are already:

- Giving the children more opportunities for extended writing



We are already:

- Making changes to school timetables and plans, to maximise learning



We are already:

- Setting out our data about the children's progress in new ways, and showing clearly how we spend our 'Pupil Premium' money





## How can parents help?

- Continue to read regularly with your children (it makes all the difference)
- Ask the children what they have been learning about, and what they need to do next to improve
- Speak to us if you are concerned about your child's progress in a particular area
- Explain to other people that there are lots of positives about the school, and that we are already working hard to reach our targets

## Thank you...

...for the amazing ways in which you support the school and make this a wonderful place to learn, work, play and be.

