

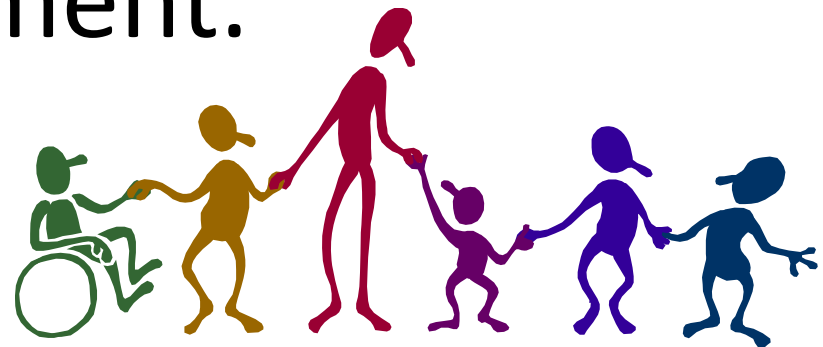


St Mary's Bryanston Square

Ofsted Parents' Meeting
1 year on...

Ofsted Inspection February 6th & 7th 2014

‘The school is a cohesive community focused on raising standards while maintaining the strong culture of pupils’ spiritual, moral, social and cultural development.’





The Strengths of the School:



- Children's *exemplary* behaviour around the school and their highly positive attitudes in lessons
- Children's Social, Moral, Spiritual and Cultural Development
- Positive learning environments created by teachers
- Teaching of Reading and children's enjoyment of reading
- The rapid progress some pupils make as a result of good teaching
- The way support staff help children with their learning
- The effective teaching and variety of activities on offer in the Early Years
- Positive links with parents and the local community
- Range of trips and extra-curricular activities
- Sports provision

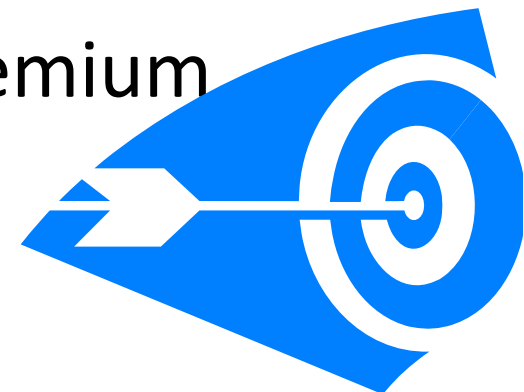
The report said the school was **already**:

- Improving progress across the school so that there is no 'gap' between different groups of children
- Accelerating progress (for all children)
- Developing teaching
- Identifying the right actions to move the school forward

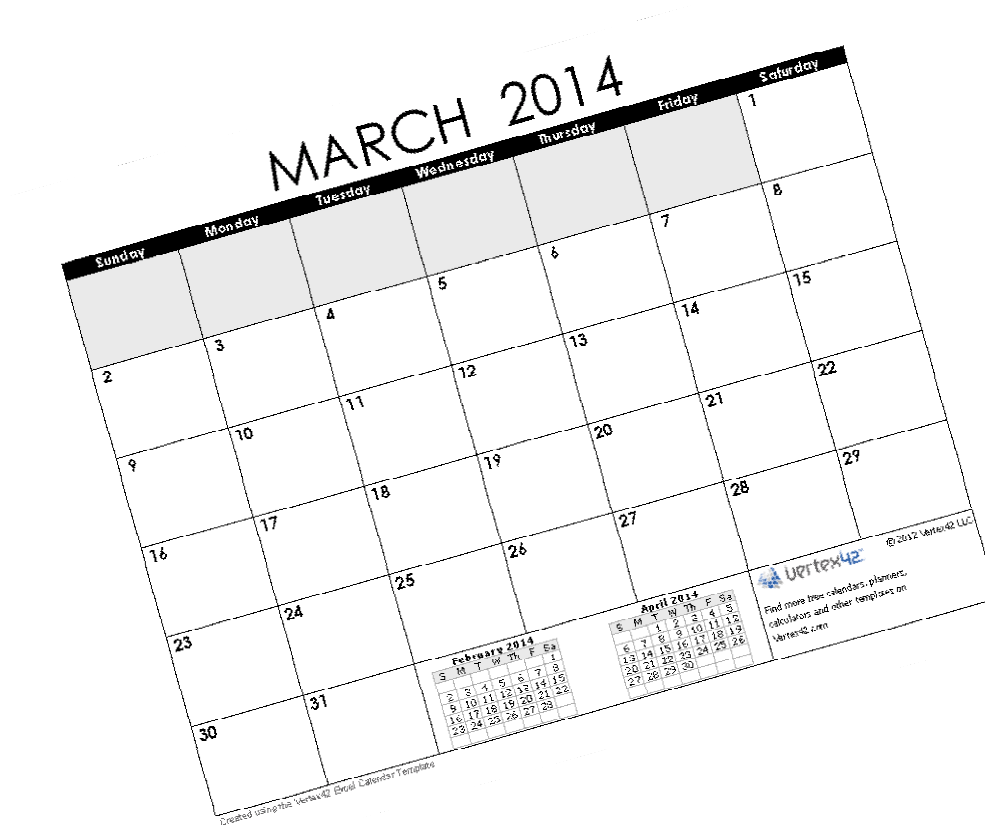


The report said we particularly needed to:

- Continue making improvements to teaching (so that all children achieve as highly as possible)
- Develop Writing and Maths, so that children achieve as highly in these as in Reading
- Make it clear how well children are progressing (especially Pupil Premium children) with statistical data



A year ago, we said we would:



1. Implement a new marking system

What went well:
Even better if:



We have done this, and it is having a very positive impact on children's class work and on their progress. We are continually fine-tuning the feedback we give to children, so that it accelerates their progress.

2. Hold regular Pupil Progress meetings to discuss ALL the children, on an individual basis, to check how they are progressing and where necessary give extra support



We do this every term, and it is helping every child achieve as highly as possible.

3. Visit other schools to pick up ideas and tips



Schools we have visited include:

- *Gateway Academy*
- *St Vincent's*
- *Christchurch Bentinck*
- *St Matthew's*
- *St Peter's Eaton Square*
- *Hampden Gurney*
- *All Souls*
- *St Barnabas*
- *St George the Martyr (Camden)*



We are continuing to do this, as well as sharing the best practice in our own school. This is helping us pick up great new ideas, which are helping the school to develop.

4. Give the children more opportunities for extended writing



We have increased the amount of Writing children do each week. We also do regular 'Topic Writing' to give children extra opportunities for Writing. We are using the approach and resources of Alan Peat.

5. Make changes to school timetables and plans, to maximise learning



We look at timetables regularly to make sure children get the most from their learning time. E.g. most children now do Maths first thing in the morning.

6. Set out our data about the children's progress in new ways, and show more clearly how we spend our 'Pupil Premium' money



We have a HUGE spreadsheet showing how every penny of the Pupil Premium is spent, which staff contribute to and Governors challenge. Since Ofsted 73% of gaps have significantly reduced.

How can we be sure the school is
doing enough to improve?



HMI

We have a senior Ofsted inspector (HMI) who visited us in May 2014 and monitors our progress. His view is that the school IS taking effective action to improve.

Tribal
1-4 Portland Square
London
W1H 1DL

T 0300 123 1231
Text Phone 0161 618624
enquiries@ofsted.gov.uk
www.ofsted.gov.uk

Direct T 0117 311 5307
Email: rachael.norwood@ofstgovern.com

Ofsted
raising standards
improving lives

22 May 2014

Emily Norman
Headteacher
St Mary's Bryanston Square CofE School
Enford Street
London
W1H 1DL

Dear Miss Norman

Requires Improvement: monitoring inspection visit to St Mary's Bryanston Square CofE School

Following my visit to your school on 22 May 2014, I write on behalf of Her Majesty's Chief Inspector of Education, Children's Services and Skills to report the findings. Thank you for the help you gave me and for the time you made available to discuss the actions you are taking to improve the school since the most recent section 5 inspection.

The visit was the first monitoring inspection since the school was judged to require improvement following the section 5 inspection in February 2014. It was carried out under section 8 of the Education Act 2005.


Senior leaders and governors are taking effective action to tackle the areas requiring improvement identified at the recent section 5 inspection. The school should take further action to:


- increase the pace at which the external review of the school's use of pupil premium funding is completed, so that leaders can continue to improve this aspect of leadership.


Evidence

During the visit, meetings were held with you and other leaders to discuss the action taken since the last inspection. The school's action plan was evaluated. You joined me on some visits to lessons where we observed teaching and learning, and looked at pupils' work. I scrutinised some English and mathematics work from pupils in years 4 and 5. I held discussions with four teachers and six pupils from Years 1-5. I also met with four members of the governing body and held a discussion with the lead advisor from the local authority.

SIAMS

 CHURCH OF ENGLAND
ARCHBISHOP'S COUNCIL
EDUCATION DIVISION

 THE NATIONAL SOCIETY

 The Methodist Church

National Society Statutory Inspection of Anglican and Methodist Schools Report

St Mary's Bryanston Square C of E Primary School
Enford Street
London
W1H 1DL
Previous SIAMS grade: **Outstanding**
Diocese: London
Local authority: Westminster
Dates of inspection: 15 December 2014
Date of last inspection: May 2009
School's unique reference number: 101136
Headteacher: Miss Emily Norman
Inspector's name and number: Gill Walley (NS 444)

School context

This is a one form entry school in Marylebone with 224 pupils on roll, most of whom live locally. The number with special educational needs and the number who are disadvantaged are both above average. Approximately 75% of pupils speak English as an additional language. The main groups of pupils are White British and African and almost half of the families are of Muslim faith. The headteacher has been in post since January 2014 and the Chair of Governors was appointed in September 2014. In February 2014 the school was judged by Ofsted to Require Improvement. A small minority of the families worship at the parish church and approximately 25% of the pupils are from Christian backgrounds.

The distinctiveness and effectiveness of St Mary's as a Church of England school are good.

- Pupils can explain what it means 'to love your neighbour as yourself' and they know that this is what Jesus commanded them to do.
- The school can now show that pupils are making better progress in Religious Education (RE) because teaching has improved and teachers are now giving pupils feedback to help them improve.
- Parents appreciate the school's Christian ethos because it gives their children good values to live their lives by. They feel that the school supports all children and their families extremely well, whether or not they are Christians.
- Governors know what the school is doing well and how it can be improved further because they are now monitoring all aspects of the school's Christian distinctiveness with increasing rigor.
- Pupils develop their spirituality and understanding of the Christian faith through well planned collective worship (CW) in school and at the parish church.
- The school is working more closely with the incumbent and the parish church so that pupils have a deeper sense of belonging in their community.

In December, we were inspected for our 'effectiveness as a Church School', which found us to be **Good** overall (the best result we could have achieved). The inspection was carried out by an Ofsted inspector.

SATs Results

Results in *every key stage* went up last year:
EYFS 'Good Level of Development' went from 27% to 48%

KS1 achieved as well as other children nationally in Phonics

The average points score at the end of **KS1** was the highest it's been for 6 years

In **KS2**, 81% achieved Level 4 in Reading+Writing+Maths, compared to 70% last year (including 100% level 4 in Reading and 96% in Maths)

School Governing Body



In the last year, there have been quite a few changes on our Governing Body. The Governors are working very hard in 3 new committees, as well as termly Governors' meetings, to check the quality of education in the school and hold school staff to account.

Ask the children!



The real test of how well we are doing is what the children think. They tell us they like the feedback they get from teachers, they can see their Writing improving, they feel they get the right help when they need it, and they enjoy their lessons.

Do ask them what they think about school, and let us know!

next
steps



Maths Mastery

We have introduced a new programme called 'Maths Mastery' this year. Year 1 are trialling it, but we are all starting to use the principles, and next year we hope to use the curriculum in other year groups.



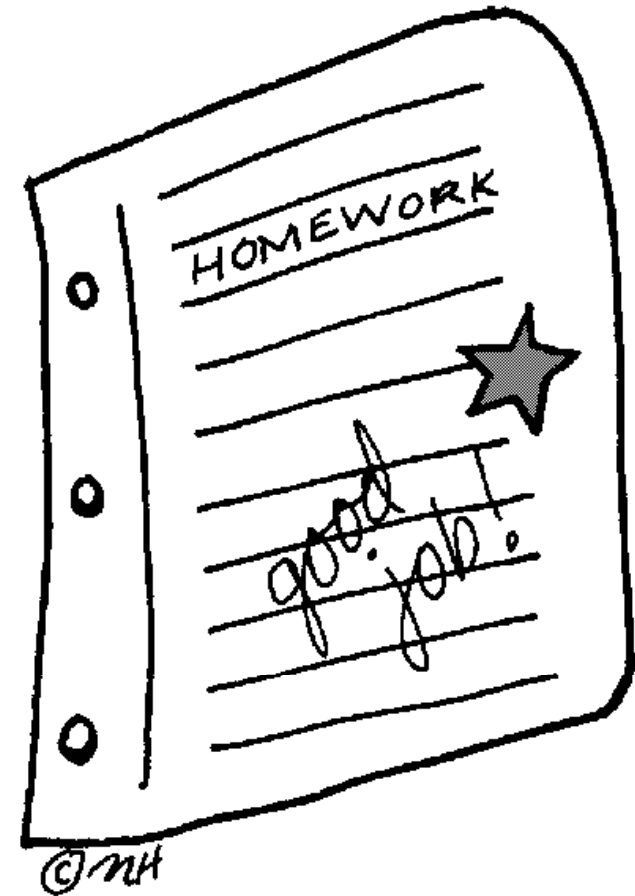
Challenge for children at all levels



We are looking at ways we can make sure that whatever level your child is at, they will be challenged as much as possible.

Homework

We are continuing to think about ways to make homework as helpful and effective as possible... watch this space



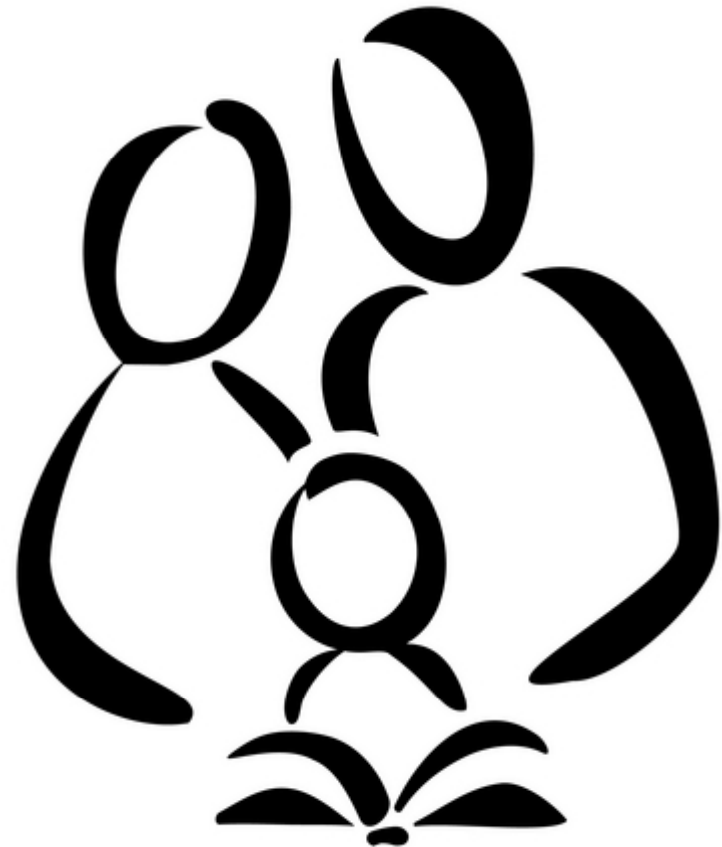
Assessment



‘Levels’ are being discontinued nationally from September, so you will start to notice different systems for recording the standards your children achieve. We will continue to use both systems for a while, so we can be sure that children continue to make excellent progress across the school.

How can parents help?

- Continue to read regularly with your children, or if they're older, check they are reading independently
- Encourage children with their school work by asking them what they have been learning about, and what they need to do next to improve
- Support your children with their homework and out of school learning
- Speak to us if you are concerned about your child's progress in a particular area



Attendance



You will have noticed a big push on attendance and punctuality. We want every child to get the most they possibly can out of the teaching we're offering, so they can achieve the best possible results! Please be on time, and don't take children out of school during term-time. Thank you

Thank you...

...for your ongoing support as we go through this process of trying to make St Mary's the most brilliant school we can for our children

...for your encouragements and positive comments

...for running and attending fantastic community events which enrich all our lives

...for coming today 😊